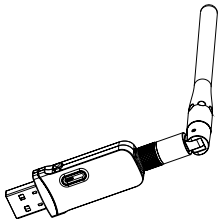


amazonbasics

Quick Start Guide
Guide de Démarrage Rapide
Kurzanleitung
Guida Rapida
Guía de Inicio Rápido
クイックスタートガイド
快速使用指南



Wi-Fi 11N USB Adapter, Black, 300 Mbps

Adaptateur USB Wifi 11 N, Noir, 300 Mbps

Wi-Fi 11N USB-Adapter, Schwarz, 300 Mbps

Adattatore USB Wi-Fi 11N, Nero, 300 Mbps

Adaptador USB Wi-Fi 11N, Negro, 300 Mbps

Wi-fi 11N USB アダプター、黒、300メガバイト

11无线 USB 适配器，黑色，300 Mbps

B071Y6Y83W



Quick Guide • English

Wi-Fi 11N USB Adapter, Black, 300 Mbps

Contents:

Before getting started, ensure the package contains the following components:

- Wi-Fi 11n 300 Mbps USB Adapter.
- Antenna.
- Adapter installation disc.

USA: FEDERAL COMMUNICATIONS COMMISSION (FCC) STATEMENT

1. This device complies with Part 15 of the FCC Rules. Operation is subject to the following two conditions:

- (1) This device may not cause harmful interference.
- (2) This device must accept any interference received, including interference that may cause undesired operation.

2. Changes or modifications not expressly approved by the party responsible for compliance could void the user's authority to operate the equipment.

NOTE: This equipment has been tested and found to comply with the limits for a Class B digital device, pursuant to Part 15 of the FCC Rules. These limits are designed to provide reasonable protection against harmful interference in a residential installation.

This equipment generates uses and can radiate radio frequency energy and, if not installed and used in accordance with the instructions, may cause harmful interference to radio communications. However, there is no guarantee that interference will not occur in a particular installation. If this equipment does cause harmful interference to radio or television reception, which can be determined by turning the equipment off and on, the user is encouraged to try to correct the interference by one or more of the following measures:

- Reorient or relocate the receiving antenna.
- Increase the separation between the equipment and receiver.
- Connect the equipment into an outlet on a circuit different from that to which the receiver is connected.
- Consult the dealer or an experienced radio/TV technician for help.

English

Français

Deutsch

Italiano

Español

日本語

中文

FCC Note:

For this device, the highest reported SAR value for usage for usage near the body is 0.495 W/kg. While there may be differences between the SAR levels of various phones and at various positions, they all meet the government requirements. SAR compliance for body-worn operation is based on a separation distance of 5 mm between the unit and the human body. Carry this device at least 5 mm away from your body to ensure RF exposure level compliant or lower to the reported level. To support body-worn operation, choose the belt clips or holsters, which do not contain metallic components, to maintain a separation of 10 mm between this device and your body. RF exposure compliance with any body-worn accessory, which contains metal, was not tested and certified, and use such body-worn accessory should be avoided.

IC NOTICE TO CANADIAN USERS

This device complies with Industry Canada license-exempt RSS standard(s). Operation is subject to the following two conditions: (1) This device may not cause interference, and (2) This device must accept any interference, including interference that may cause undesired operation of the device. This device complies with RSS-247 of Industry Canada. Operation is subject to the condition that this device does not cause harmful interference. This Class B digital apparatus complies with Canadian ICES-003 (Cet appareil numérique de la Classe B conforme à la norme NMB-003 du Canada).

The SAR limit of CANADA (IC) is 1.6 W/kg averaged over one gram of tissue. Device types AmazonBasics Wi-Fi Adapter (IC:10828A-B071Y6Y83W) has also been tested against this SAR limit. The highest SAR value reported under

this standard during product certification when properly worn on head is 0.495/ kg.

Le présent appareil est conforme aux CNR d'Industrie Canada applicables aux appareils radio exempts de licence. L'exploitation est autorisée aux deux conditions suivantes : (1) l'appareil ne doit pas produire de brouillage, et (2) l'utilisateur de l'appareil doit accepter tout brouillage radioélectrique subi, même si le brouillage est susceptible d'en compromettre le fonctionnement.

La limite SAR du CANADA (IC) est de 1,6 W / kg en moyenne sur un gramme de tissu. Types de périphériques L'adaptateur Wi-Fi de AmazonBasics (IC: 10828A-B071Y6Y83W) a également été testé en fonction de cette limite SAR. La valeur SAR la plus élevée rapportée selon cette norme lors de la certification du produit lorsqu'il est correctement porté sur la tête est de 0.495/ kg.

Max RF power level: Wifi (2412-2472MHz): 12.8dBm

The SAR limit of Europe is 2.0 W/kg. Device types Wi-Fi Adapter has also been tested against this SAR limit. The highest SAR value reported under this standard during product certification for use when properly worn on the body is 0.249 W/kg. This device was tested for typical body-worn operations with the back of the handset kept 5 mm from the body. To maintain compliance with RF exposure requirements, use accessories that maintain a 1.5 cm separation distance between the user's body and the back of the handset. The use of belt clips, holsters and similar accessories should not contain metallic components in its assembly. The use of accessories that do not satisfy these requirements may not comply with RF exposure requirements, and should be avoided.

English

Français

Deutsch

Italiano

Español

日本語

中文

Low Voltage Directive (2014/35/EU)

- EN 60950-1:2006/A11:2009/A1:2010/A12:2011/ A2:2013

The Radio Equipment Directive (2014/53/EU):

- ETSI EN 300 328 V2.1.1(2016-11)
- ETSI EN 301 489-1 V2.2.0(2017-03)/ETSI EN 301 489-17 V3.2.0(2017-03)
SI EN301 908-13 V11.1.1(2016-07)

Hereby, Compupal (Group) Corporation declares that the radio equipment type (AmazonBasics Wi-Fi Adapter, B071Y6Y83W, WA02) is in compliance with Directive 2014/53/EU.



Disposal



Electronic adapters are recyclable waste and must not be disposed of in the household waste. Dispose of this equipment using a designated collection point for the recycling of lectrical and electronic equipment.

Safety

- Read this instruction manual carefully before using the adapter. It contains important information for your safety as well as operating and maintenance advice.
- Keep this instruction manual for future use. Should this adapter be passed on to a third party, then this instruction manual must be included.
- No liability will be accepted for damage resulting from improper use or non-compliance with these instructions.
- This adapter contains no user serviceable parts and requires little maintenance. Leave any servicing or repairs to qualified personnel only.
- The appliance is not suitable for commercial use. This appliance is only suitable for household use.
- This appliance is intended for indoor use only.
- Keep this adapter and its accessories away from small children. This adapter is not a toy and may be hazardous to small children. A choking hazard may exist for small, detachable parts.

Connecting the antenna

Mount the antenna to the USB adapter by screwing it on the antenna connection.

WPS-connectivity

- A. Press the WPS button on your home router.
- B. Within 2 minutes, press the WPS button on the adapter. The connection is now established.

Note: This printed manual is a shortened quick start guide to explain how to connect your device to a network via the WLAN adapter. The software for this product and more detailed user manual can be found on the software CD (included) and/or can be downloaded online from: www.amazon.com/dp/B071Y6Y83W.

Note: If you have installed the WLAN Adapter driver & utility before, please uninstall the previous version first.

MAC OS SETUP

Installing the Utility Software

Note: The installation was carried out on a machine running MacOS Sierra 10.12.6.

A. Insert the MAC OS software CD into the CD-ROM Drive. Double click on the file named "Install.pkg".




B. Click "Continue" and follow the on-screen instructions.

C. Accept the terms of the licence agreement and click "Next".


Note: If you want to change the installation setup, click "Back" to return to the previous page and set it up again. If you want to quit the installation, please click "Cancel".

D. Click "Restart" to complete the installation and restart the computer.

Check Adapter Status

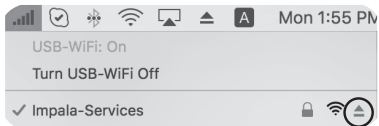
- After the installation is complete, the icon  will appear on the taskbar.
- Plug the adapter into the USB port.
- After plugging in, the blue LED indicator on the adapter flashes. Right click on icon  and then click "Turn USB-WiFi On". The icon  appears on the taskbar.

Connecting to the network

- Click  and then click on the Wi-Fi network you want to connect to. Type in the password and click "Join".

Disconnecting from the network

- To disconnect from the Wi-Fi network, click  and then  next to the Wi-Fi network you want to disconnect from.



For detailed information, functions and options please read the manual in the "pdf" format stored on the supplied installation CD.

WINDOWS SETUP

Installing the Utility Software

A. Insert the Windows software CD into the CD-ROM Drive. Double click on the file named "Setup.exe".


B. Click "Next" and follow the on-screen instructions.


C. Accept the terms of the licence agreement and click "Next".

Note: If you want to change the installation setup, click "Back" to return to previous page to set it up again. If you want to quit the installation, please click "Cancel".

D. Click "Finish" to complete the installation and restart the computer.

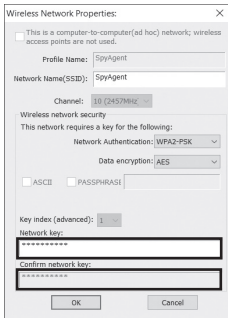
Check Adapter Status

- After the installation is completed, the icon  will appear on the desktop
- Plug in the adapter into the USB 2.0 port.

- After plugging in, the blue LED indicator on the adapter flashes. Click on the  icon to open the utility software.

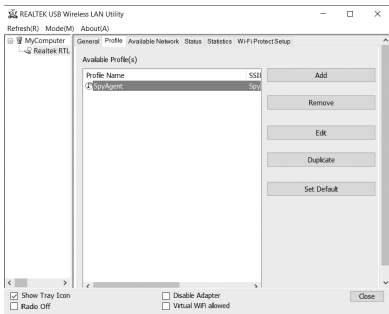
Connecting to the network

- Click on “Available Network”. The list of currently available networks is shown in the window.
- Double click on the desired network.
- Type in the network password in the “Network Key” and “Confirm network key” tabs and click “OK”.



Disconnecting from the network

- To disconnect from the Wi-Fi network, go to “Profile” section, mark the network and click “Remove”.



Specifications

Main Chipset	RTL8192EU
Interface	USB 2.0
Protocol and standard	802.11b: CCK, QPSK, BPSK; 802.11g/n: OFDM
Frequency	2412 MHz – 2484 MHz ISM band
Antenna	2 output internal antenna
Security	WEP, WPA-PSK, WPA2-PSK (TKIP/AES)

Physical Specification

Operating conditions	-10 to +50 °C, 20 - 80 % RH
Storage conditions	-20 to +85 °C, 20 - 90 % RH
Size	170 x 21.5 x 11 mm
Net weight	18.2 g

Disclaimers

THESE MATERIALS AND INFORMATION ARE PROVIDED "AS IS" WITHOUT WARRANTY OF ANY KIND, EITHER EXPRESS OR IMPLIED, INCLUDING BUT NOT LIMITED TO, THE IMPLIED WARRANTIES OF MERCHANTABILITY, FITNESS FOR A PARTICULAR PURPOSE OR NON-INFRINGEMENT.

We uses reasonable efforts to include accurate and up-to-date information on this document; it does not, however, make any representations as to its accuracy or completeness of the information, text, graphics, links or other items contained within these materials. Your use of this Document is at your own risk. Its suppliers, and other parties involved in creating and delivering this Document's contents shall not be liable for any special, indirect, incidental, or consequential damages, including without limitation, lost revenues or lost profits.

Warranty Information

To obtain a copy of the warranty for this product:



Visit amazon.com/AmazonBasics/Warranty

— or —



Contact Customer Service at 1-866-216-1072

English

Français

Deutsch

Italiano

Español

日本語

中文

English

Français

Deutsch

Italiano

Español

日本語

中文

Feedback

Love it? Hate it?

Let us know with a customer review.

AmazonBasics is committed to delivering customer-driven products that live up to your high standards. We encourage you to write a review sharing your experiences with the product.

Please visit: amazon.com/review/review-your-purchases#



For further services:



Visit amazon.com/gp/help/customer/contact-us

— or —



Contact Customer Service at 1-866-216-1072

amazonbasics

amazon.com/AmazonBasics

MADE IN CHINA